

DESSERT SHOP & DIY SPACE

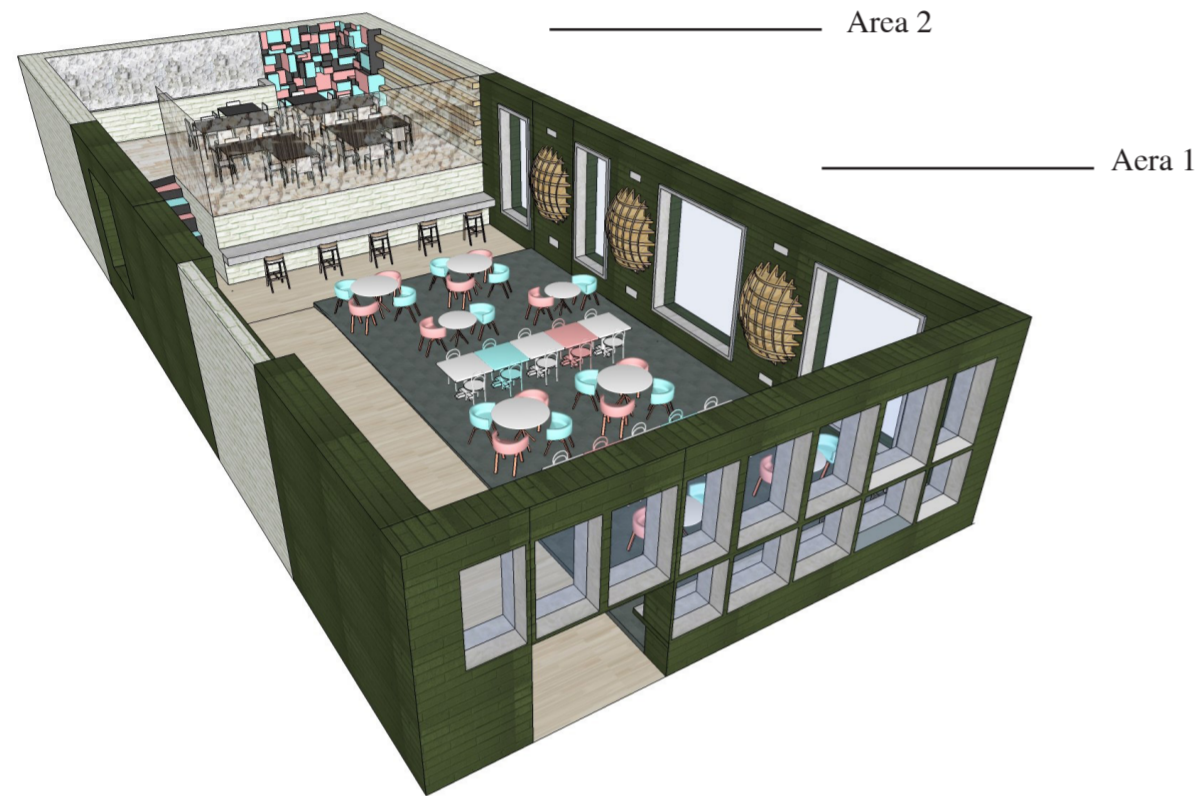
Lu Yingqi

The space that I am design a dessert shop, but it combines two different functions into the same place. Enjoying desserts and beverages, painting the cups or saucers. All of these can do in this shop.

Dessert space - Area 1; DIY space - Area 2

When the first step into the shop, there has a main of dessert counter in your left hand. Then you can take your order food go to the right side, where is provided many seats for the customer. If you want to admire the view can seat the front of bar, or seat the back to see some people what are they doing in DIY space. Furthermore, there have some convex display in the both sides of area 1. The showcase are used to display some beautiful drawing cups and saucers, so everyone enter the shop can visit these.

The second floor is belong to self design and painting area. When you walk up the stairs, there have a counter to offer customers some white cups or saucers can used for drawing. Then, go to the workbench and seat to start your idea. Near the counter is a machine which can stove the porcelain cup after finished painting, it makes sure the colour can save for a long time. In the right corner is the place can find different types of colour box. Turn to right side, there can put some not dry cups and wait for stoving. Finally, your DIY cups can tie to the rope then as decoration put around the stairs and bar.



Saucers

Cups

