



32

**Cambridge
Street**

Yingqi Lu

RESEARCH
PORTFOLIO

CONTENTS

1 Introduction	1
2 Location & Context	2
3 History	4
4 Interior	6
5 Aesthetic & Form	8
6 Materials & Construction	10
7 Conclusion	12

INTRODUCTION

In my research portfolio, i want to share more information about this building. It is a old Sunday School with long history, so i have to find some sources on this building through variety of approach. I have do some field visit in several times about the building and take some photos from different views. When go back home, i continue to find some details information on website because it hard to look up all helpful sources from books or related magazines. After that, i start to write my portfolio about 32 Cambridge street.



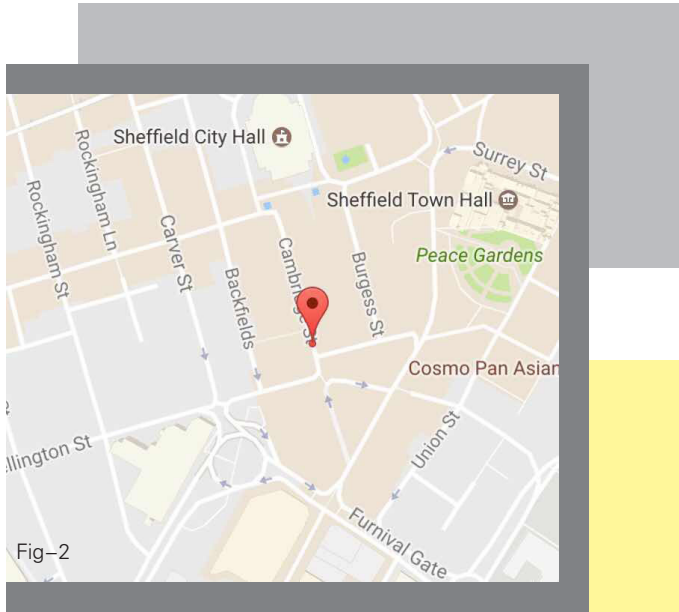
Fig-1



The 32 Cambridge street existed in there for long time, and as times goes on, had significantly change around surrounding area. There are countless shops appeared then disappeared but buildings which in the Cambridge street stop for many years and not be demolished. The original intent of the building are changed over time, but now all of them as historical landmark in Sheffield.

LOCATION & CONTEXT

The 32 Cambridge street is a historical architecture on this street. It is situated in Sheffield, near Sheffield City Hall and Sheffield Town Hall.



If someone have been there will find which is between Backfield and Burgess street. Then follow the Cambridge street, the building is between 'DINA' and another design store called 'Stone the Crows'. Moreover, this building still opposite to the John Lewis, the biggest department store in every city. Therefore, 32 Cambridge street has a good position which in city center and still have many small shops and restaurants open in there.



Fig-3



HISTORY

The Bethel Sunday School was the first school in Sheffield which opened in 1852. After then, the school closed and the space with two next door buildings all turned into a pub.

On December 12th, 1995, 32 Cambridge street was named a grade two listed building. With the following years, this building with another small white building start to extend for a public space and sometime have many activities held in there. Nowadays, Cambridge street start to develop as a emerging quarter and local residents are expected for it.



Fig-4



Fig-6



Fig-5

'DINA' is the name for the small white building in 32 Cambridge street, which is the abbreviation of 'Digital Natives', but many people think which means 'Diner' when they first coming there.

In 1983, the building have another name 'Stardust Bar' which as a nightclub in Cambridge street. After several years, many other shops or bar opened around there and the old nightclub closed in 2015. Then DINA appeared to replace the original bar.

The decline of old industries mean that the place need some new blood coming. Now the building as a hub for creative and digital practice, and sometimes there have events include learning adventures, performance and exhibition. Every Saturday have a social canteen with home cooked food, hot drinks and free wifi in DINA. It provide a good space for people in any ages.

DINA

Fig-7



INTERIOR

Since 1983, 32 Cambridge street and the white building became the same place. These two spaces excited as part of Stardust Bar. In the interior of brick red building which style is neoclassical. The style is designed to be a modified classical style. The feature of neoclassical style is from simple to complex, from the whole to the part. Thus, it give us a meticulous impression.



Fig-8



Fig-9

Moreover, it also have some advantage that retaining the material and color of general style, but still can feel the historical traces and cultural heritage, while abandoning the too complex texture and decoration. In this space, many seats put in the middle and counter with bar at right side. The whole of furniture used nigger-brown or dark grey colour except the ceiling.

Comparatively speaking, the interior colour in white building is bright and shining. Because the wall are printed in blue and yellow, and it used as a dancing floor which is slightly lower than the surrounding seats.

Fig-10

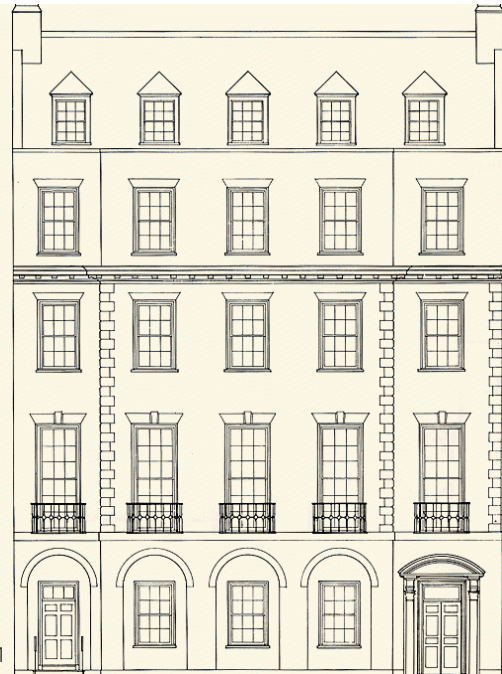


AESTHETIC & FORM

The main style of building on Cambridge street using the Georgina style which have long history before, and as one of the most consistently popular style in European countries. The most prominent feature about this style is symmetrical design, classic proportions, and decorative elements. It is effected on the reigns of England 's King Georgina, during I to III. Interestingly, the basic proportion of Georgina building is using geometric, and the body of the building is always enhanced by hyphens and wings. Return to the Cambridge street, every building use this type of style. So, this style of axis symmetry is a safe design method.



Fig-11



Georgian building

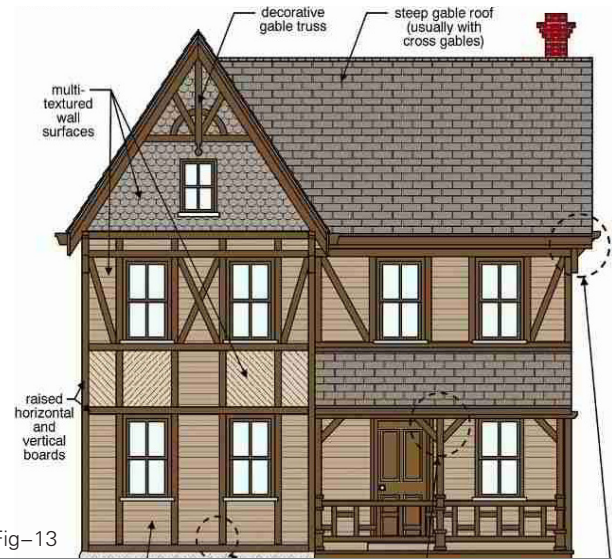


Fig-12

MATERIALS & CONSTRUCTION

The Georgian building utilizes the election of Renaissance design, such as rigid symmetry in building quality, placement of windows and doors, and even interior room layouts. Then, contact this style and applied to the building on Cambridge street.

The 32 Cambridge street is a brick red building with ashlar dressings, slate roof and single gable stack. It have some plinths can support the upper floor and gable band, single coped gable. The whole of building have three storeys and each floor with four windows, it means at least twelve windows in there. There are 15 pane sashes used on each window.



On the third floor, have three similar sashes but the one in the middle is reglazed and all of windows renovated about rusticated lintels. In the ground floor, has a double door to left and two windows to right. If turn right and into Bathel Lane, there have four windows with 20 pane totally. From the ground floor walk to left, there are four blocked windows and still have a door with glazing bar, then it connect with another window.

In accordance with Georgian style, the appearance of 32 Cambridge street utilizes the red brick. More generally, the Georgian style usually means brick and there have a typical example of the brick detail can trace back to the Westover plantation in Charles Country, Virginia. Furthermore, this style are generally used in the early 20th century.

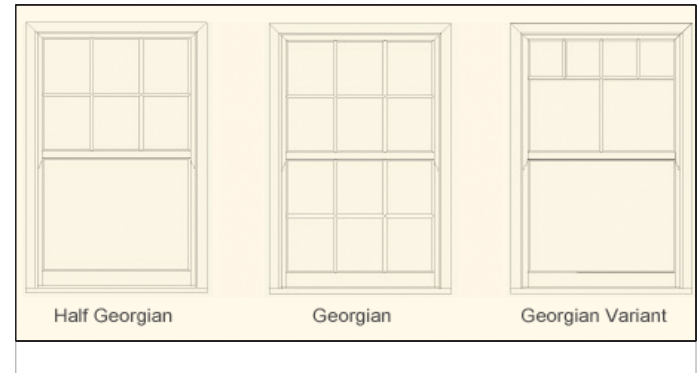
Another distinctive feature of the Georgian style is window. It is emerged into actuality like double sash windows, and small panes or lights. Georgian lumber usually show some decorative gables on windows, while Georgian brick manifest as decorative tile on window. The both of characteristic can be found in 32 Cambridge street.



Fig-14



Fig-15



CONCLUSION

According to investigate of 32 Cambridge street, which have long history from 1853 to nowadays. In the course of history, the building's role has undergone tremendous changes in different periods. Because in different stages, the demand of people are constantly changing. Thus, this has led to the transformation of regional industries.

However, the appearance of the building never have change, still maintain the original Georgian style till today. The practice not only retains the traces of history but without affecting any of the operation in modern society. Additionally, the historic buildings such as 32 Cambridge Street should be more reserved, and many people will look forward to their future development.



Fig-16



Reference

1. 32 Cambridge street. British Listed Buildings. Available at: <http://www.britishlistedbuildings.co.uk/en-456129-32-cambridge-street-/photos>
2. 32 Cambridge street. Historic England. Available at: <https://historicengland.org.uk/listing/the-list/list-entry/1247013>
3. 32 Cambridge street. jadineinteriordesign. Available at: <https://tylerjadineinteriordesign.wordpress.com/2016/01/07/an-interview-with-a-building/>
4. Georgian style. Historic Sash Windows. Available at: <http://www.mumfordwood.com/historic-sash-windows/>
5. Georgian style. Available at: <http://www.furniturestyles.net/european/english/homes/020-sash.htm>
6. Georgian Sash Window Stock Photos & Georgian Sash Window Stock Images. Available at: <http://www.alamy.com/stock-photo/georgian-sash-window.html>
7. Georgian Style. Architecture Facts and History. Guide to Architectural Styles. Available at: <http://www.wentworthstudio.com/historic-styles/georgian/>
8. Bethel Sunday School. Sheffield History. Available at: <http://www.sheffieldhistory.co.uk/forums/topic/15646-bethel-sunday-school/>

Fig-1. Date Period: 1960–1979 Photographer: K.A. Rolley

Fig-2. Google Map

Fig-3. DINA. Available at: <http://algomech.com/2016/venues/dina/>

Fig-4. Date Period: 2000–2019 Photographer: Vincent Malone

Fig-5. Available at: <https://tylerjadineinteriordesign.files.wordpress.com/>

Fig-6. Date Period: 1960–1979 Photographer: SLAI

Fig-7. DINA Venue (@DINAvenue). Twitter <https://twitter.com/dinavenue>

Fig-8. Available at: <https://tylerjadineinteriordesign.files.wordpress.com/>

Fig-9. Available at: <http://www.britishlistedbuildings.co.uk/en-456129-32-cambridge-street-/photos>

Fig-10. Available at: <https://tylerjadineinteriordesign.files.wordpress.com/>

Fig-11. Available at: <http://www.mottschmidt.com/buildings/view/decades/1920s/guy-fairfax-cary-townhouse/gallery/>

Fig-12. Available at: <http://www.tuckermadevelopment.com/AvailableNow/FeaturedSites/7855DublinGranvilleRoad.aspx>

Fig-13. Available at: <https://tylerjadineinteriordesign.files.wordpress.com/>

Fig-14. Available at: <http://www.altuswindows.co.uk/upvc-windows/cottage-style-georgian-windows>

Fig-15. Available at: <http://www.altuswindows.co.uk/upvc-windows/cottage-style-georgian-windows>

Fig-16. Date Period: 2000–2019 Photographer: Vincent Malone



100

90

80

70

60

50

40

30