

THE URBAN LIVING ROOM

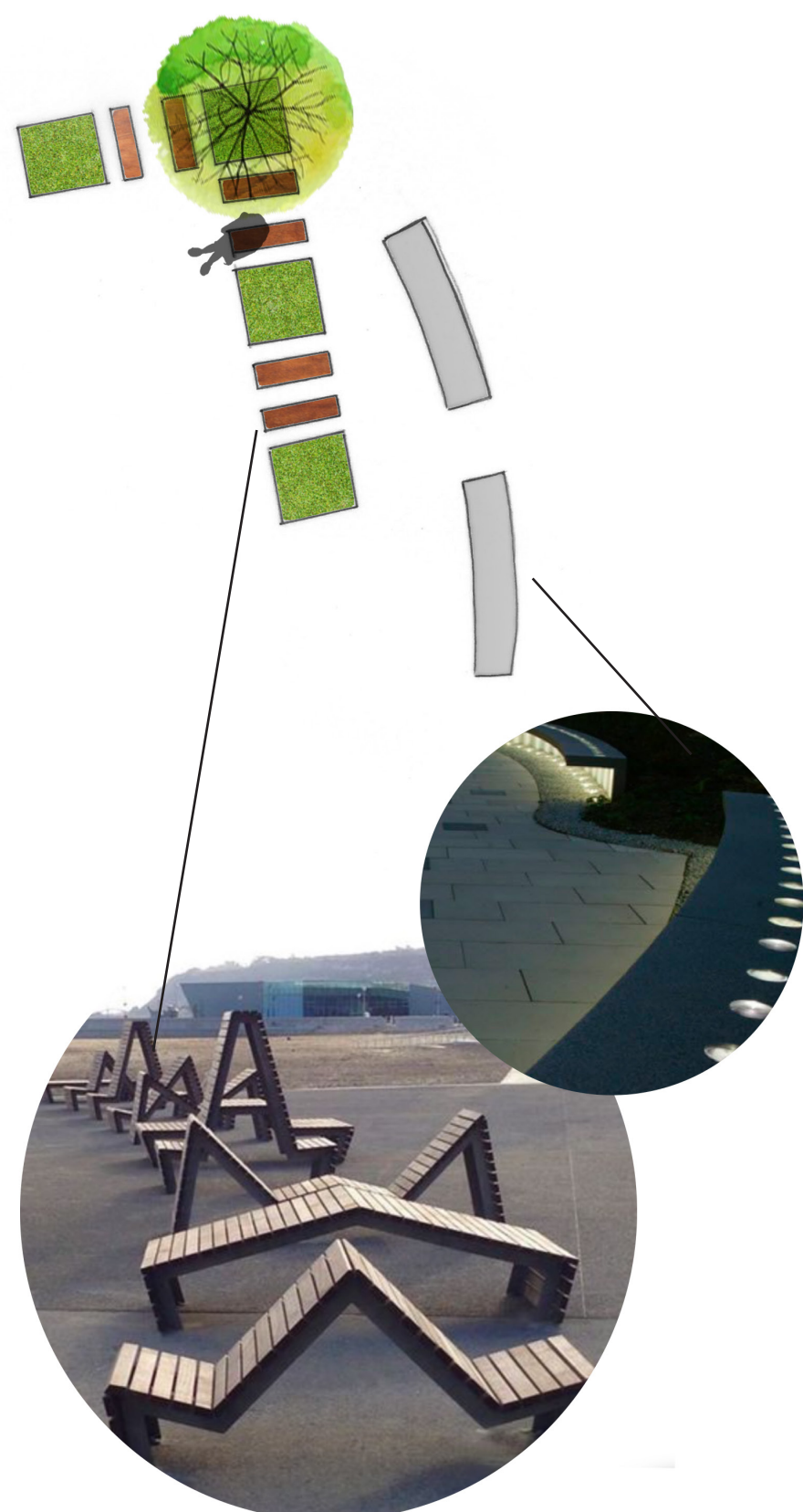
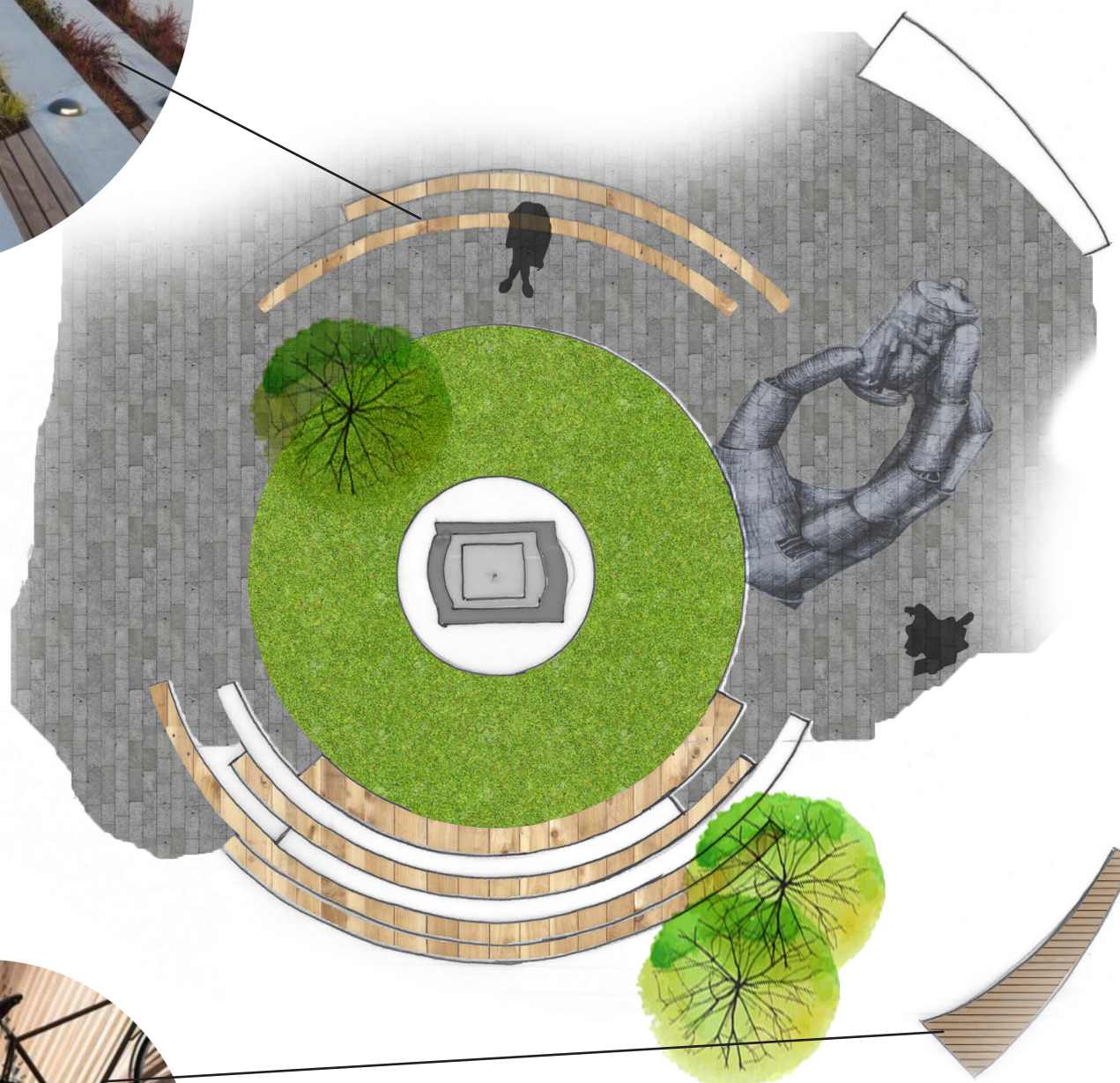
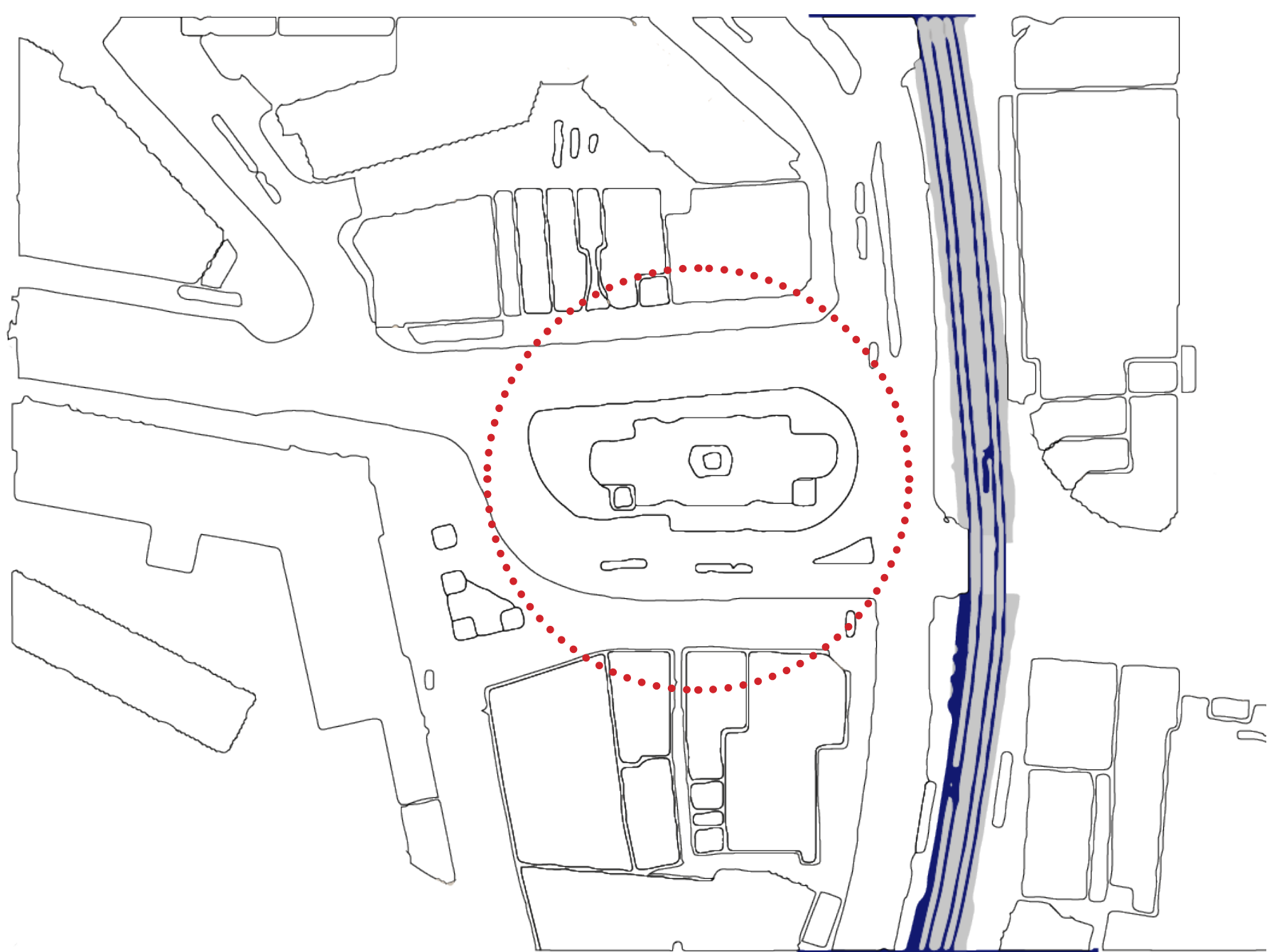
FITZALAN SQUARE, SHEFFIELD

“Connecting the City.”

CAMILLE OXBERRY, PETA-LOU KROG, MAYARA NAZARIO, LING LI, YINGQI LU



The square received a facelift in 2003 whereby the statue was cleaned and protected from pigeons, and lights were added to illuminate it at night. New sandstone paving and steel benches were installed, the trees were pruned back and improved street lighting put in. Despite all this, the square is still isolated from the city, students of the Sheffield Hallam University SIA building do not use the square regardless of its proximity to the square.



In order to connect Fitzalan Square back to the rest of Sheffield city centre, our proposal encourages the infamous sheffield street artists to use the square as their canvas. Artists like PHLEGM, Pete McKee and Rocket01 will make the square much more appealing to students, commuters and visitors of the city. Additionally, by incorporating lighting, for example neon tube lighting into the artwork, it illuminates the square making it significantly friendlier during the darker hours of the day, whilst simultaneously referencing the iconic Park Hill flats that overlook the city.

